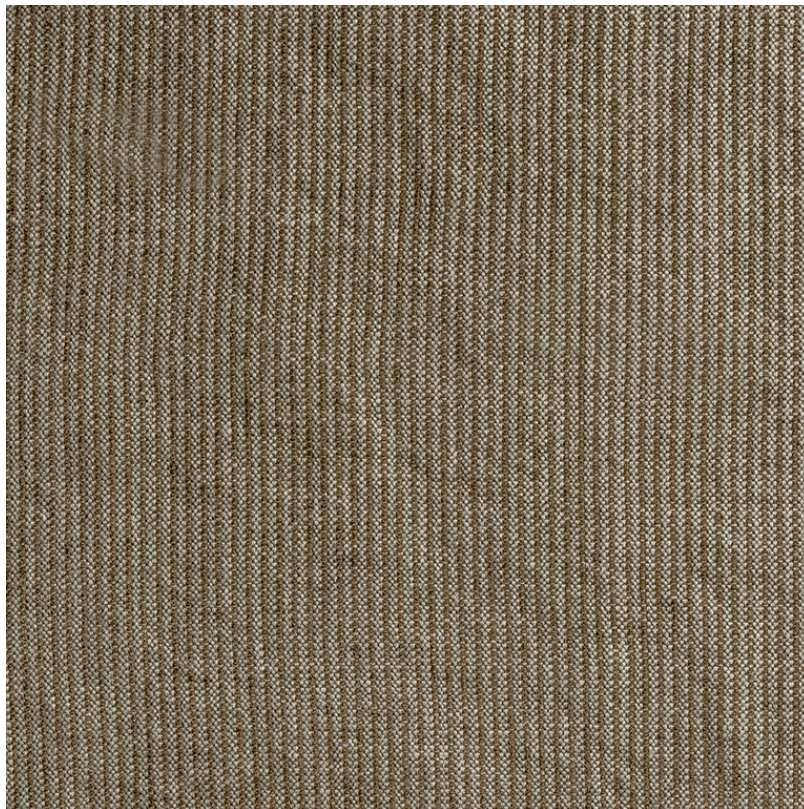



de Le Cuona



SALOPETTE - KHAKI

Item Code: **SAL2**

Effortlessly blending functionality and comfort, Salopette is a durable 100% linen fabric with a fine pinstripe, inspired by traditional workwear. The heavy stonewashed finish gives this cloth a supple handle and creates the natural irregular scars and marks. Certified by Masters of Linen, Masters of Flax Fibre, and Oeko-Tex, it combines functionality with relaxed comfort, ideal for drapery and upholstery.

| | |
|--------------------|---|
| Composition: | 100% Linen |
| Width: | 130 cm / 51 " |
| Usage: | Curtaining, Upholstery |
| Weight: | 1.15 kg |
| Martindale: | 30000 |
| Care Instructions: |  |

