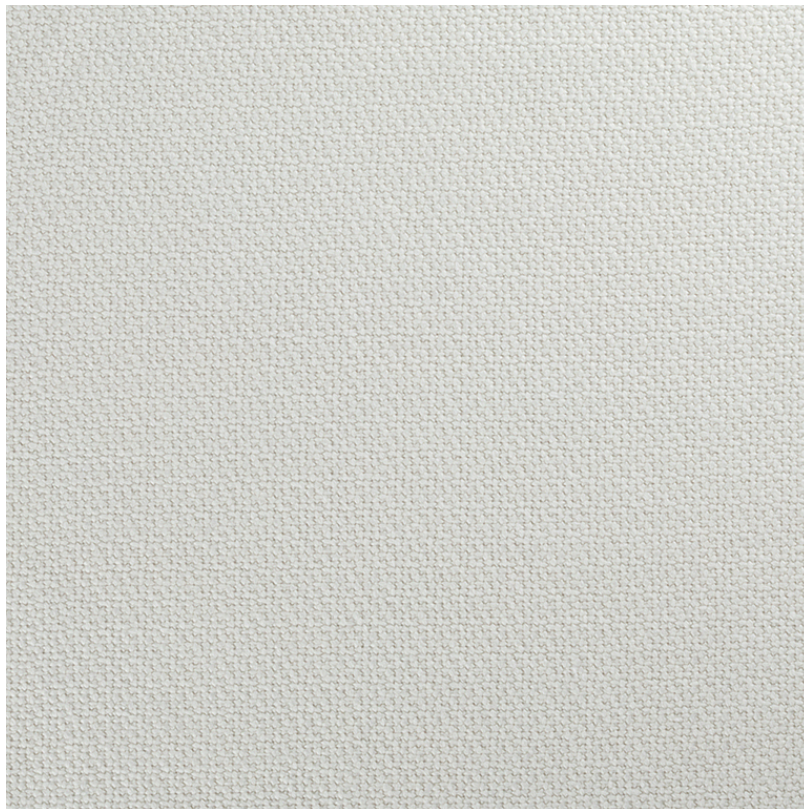


de Le Cuona



PORTRAIT - WISTERIA

Item Code: **PORT1**

A classic basketweave inspires the dense woven structure of this hemp fabric woven in Italy. With a full drape and dry handle Portrait creates tailored curtains, blinds, and upholstery. The soft neutral palette with tints of colour, is reminiscent of watercolour portraits.

Oeko-Tex Certified.

Composition: 100% Hemp

Width: 130 cm / 51 "

Usage: Curtaining, Upholstery

Weight: 1.20 kg

Martindale: 20000

Care Instructions:

