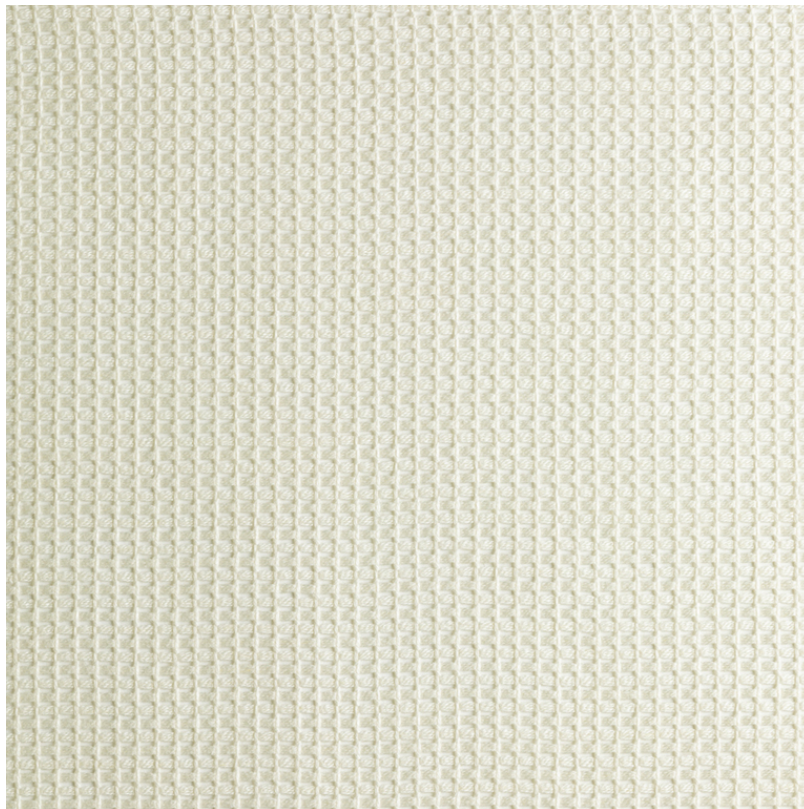


de Le Cuona



ATELIER - CHALK

Item Code: **ATE1**

Atelier is a double-width 100% sheer linen fabric which is fully reversible and inspired by London's modern skyline. The tightly twisted yarns are woven on a leno loom, which interlocks them to create an open structure. The yarns are combined to create a linear, architectural design, reminiscent of the city. This structural sheer comes in a variety of contemporary neutrals, perfect for modern living.

Oeko-Tex Certified.

Composition:	100% Linen
Width:	300 cm / 118 "
Usage:	Curtaining, Sheer
Weight:	1.25 kg
Intrastat Commodity Code:	53091900

Care Instructions: 

